

## Upgrade & Replacement

*Follow the individual procedures in this chapter to perform the notebook's upgrade and replacement of various major components.*

**A**sus W3000A Series Notebook is a 2 spindles product, which means there are less options for you to upgrade to. The key upgradeable and replaceable items include the CPU module, 1st memory module, 2<sup>nd</sup> memory module, HDD, ODD, and Wireless LAN module.

In order to avoid redundancy, please refer to chapters 3 and 4 of this manual for repeated and reused disassembly and assembly procedures, such as keyboard & heat sink replacement, which is used by several different procedures in this chapter. ***Be sure to follow the safety instructions described in Chapter 2 to safeguard the notebook against any potential damages.*** For any other components which you need to replace not covered in this chapter, please refer to Chapters 3 and 4 for detailed disassembly and assembly and perform necessary procedures accordingly.

This chapter includes the following items:

- CPU Upgrade
- Memory Upgrade
- HDD Upgrade
- ODD Replacement
- WLAN Replacement

## CPU Upgrade

The W3000A Series Notebook comes standard with a Intel® Micro-FCPGA Socket on the motherboard, which means it can support all Intel Micro-FCPGA CPUs up to 2.1 GHz.

### Upgrading CPU

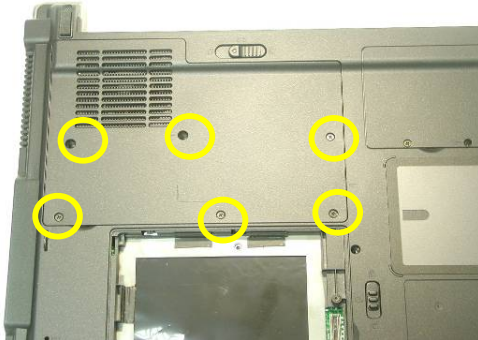
Remove battery module

1. Turn the notebook over. Unlock and hold the latch, and remove the battery .

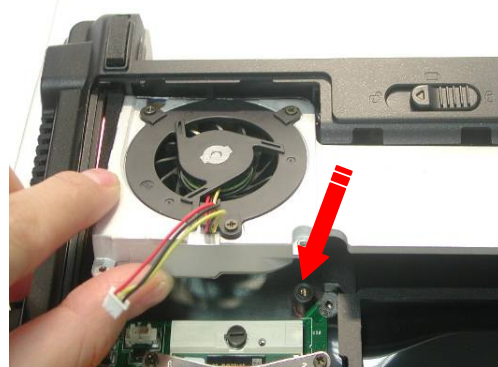
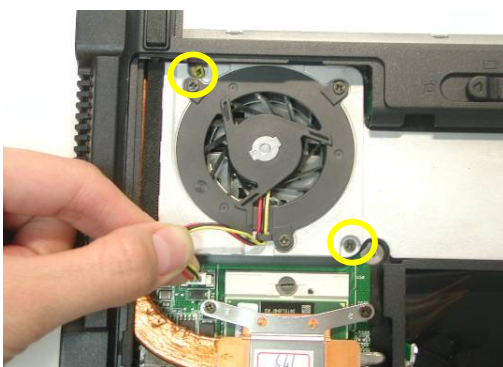


Replacement CPU

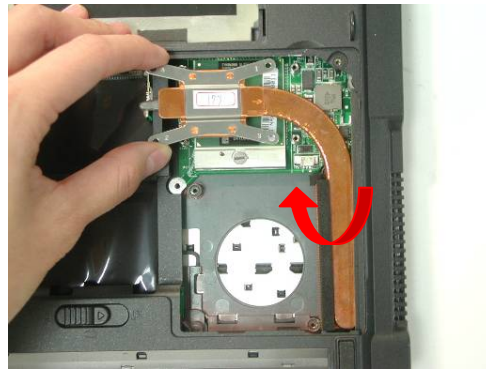
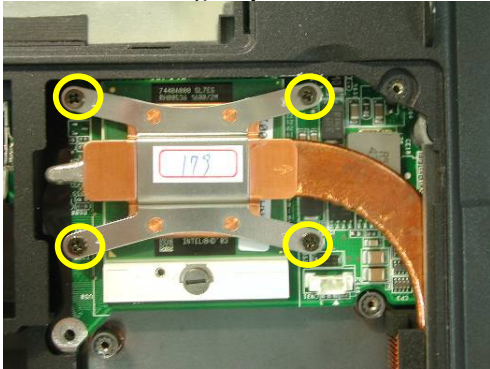
1. Remove 6 screws(M2\*4L(K)) and take the Fan bracket away.



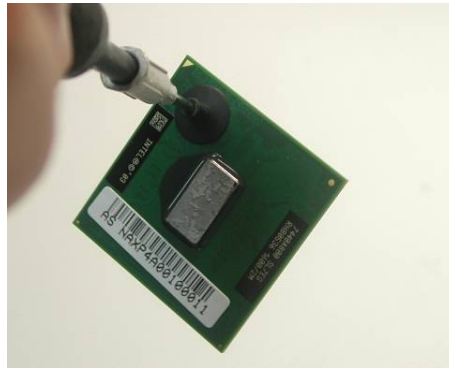
2. Disconnect the FAN connector and remove 2 screws(M2\*4L(K)) then take away the Fan Module.



- Remove the 4 screws (M2\*4L(K)) upon the thermal module and take away the CPU heat sink module gently



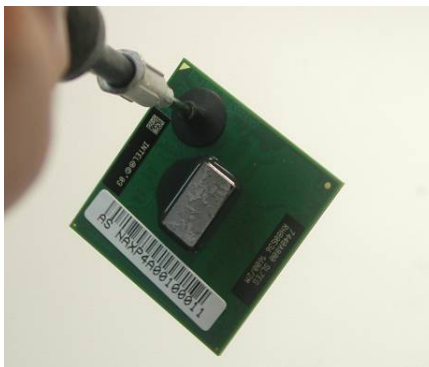
- Turn the non-removable screw here 180 degrees counter-clockwise to loosen the CPU and take the CPU away



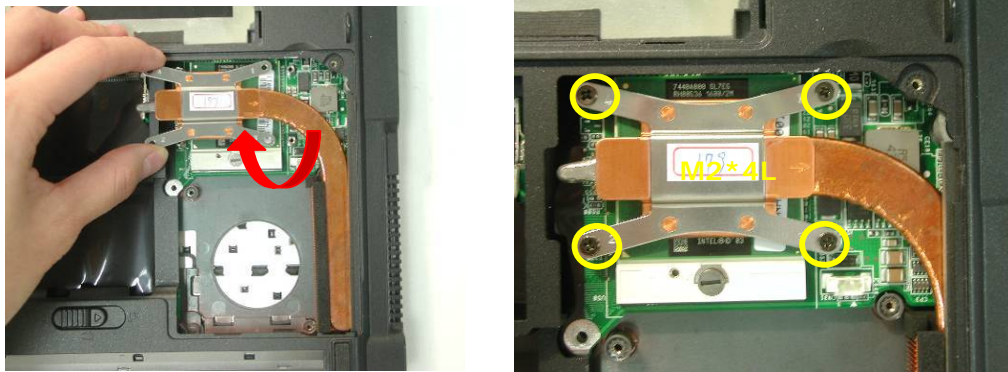
**Note: If thermal module has no thermal pad on it, please plus a thermal pad on the CPU die before assembling.**

#### Installing CPU

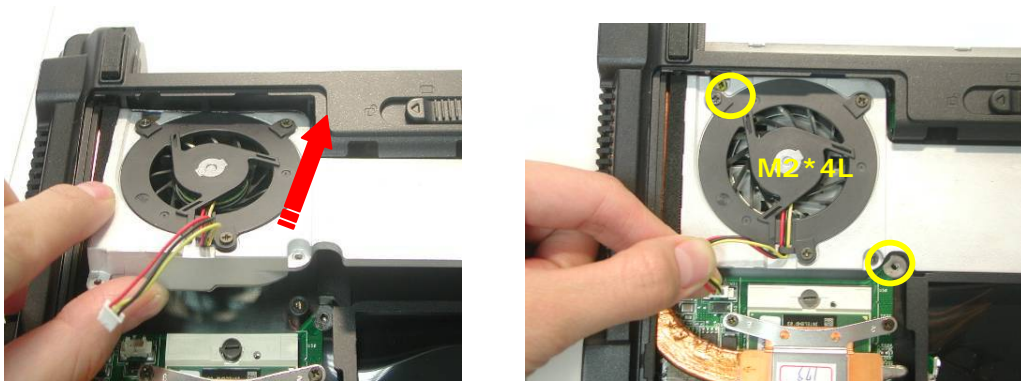
- Use the CPU vacuum to “suck up” the CPU then then Install the CPU and turn the non-removable screw here 180 degrees clockwise to lock the CPU.



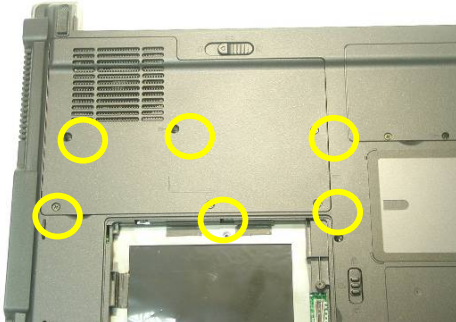
- Install the CPU heat sink module gently and secure 4 screws (M2\*4L(K)) upon the CPU module .+



3. Finally, put on the fan bracket and secure 2 screws (M2\*4L(K)).



4. Put the CPU Module cover on then secure 6 screw (M2\*4L(K)) to fix it.



Install battery module .

1. Put the battery module into its compartment.



MEMORY

### Memory Upgrade

The W3000A Series Notebook does not have onboard RAM. There are two SO-DIMM sockets for installing SO-DIMM RAM. It can upgrade the total memory size up to 2GB with a 1GB module on each socket.

#### Upgrading 2<sup>nd</sup> Memory Module

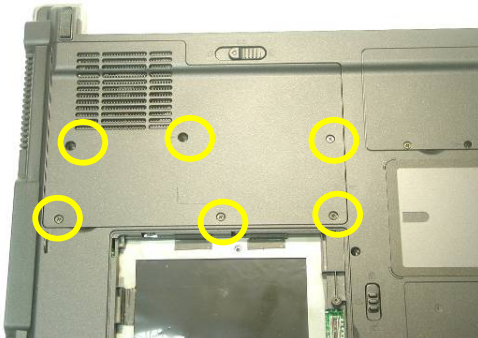
Remove battery module

1. Turn the notebook over. Unlock and hold the latch, and remove the battery .



#### Replacement Memory Module

1. Remove 6 screws(M2\*4L(K)) and take the Fan bracket away.

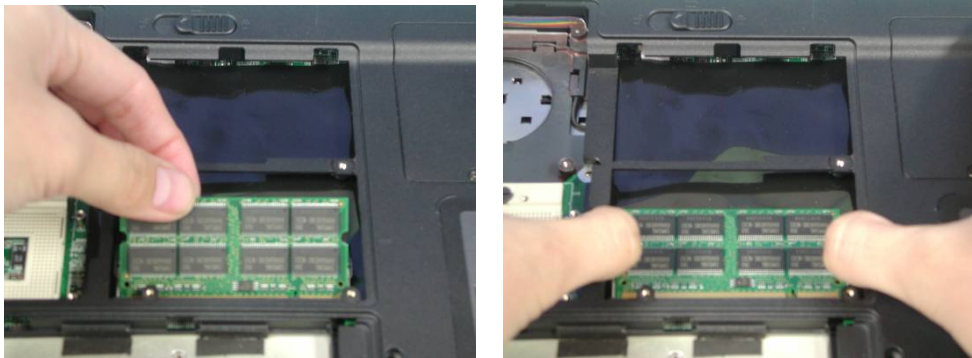


2. Pop the module up to a 45° angles, and then pulling out the module in that angle.



#### Installing Memory Module

1. Insert memory at the same 45° angles and press down until it clicks into the latches.



Install battery module .

Put the battery module into its compartment.



#### Upgrading 1st Memory Module

Remove battery module

1. Turn the notebook over. Unlock and hold the latch, and remove the battery .

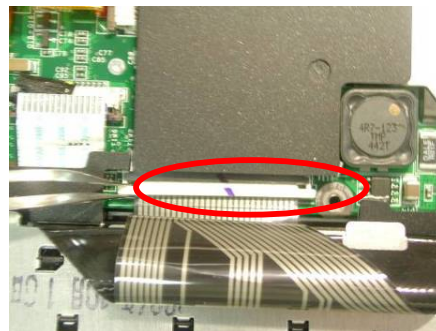


Replace Memory Module

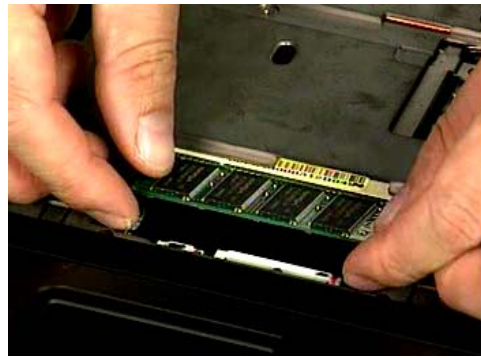
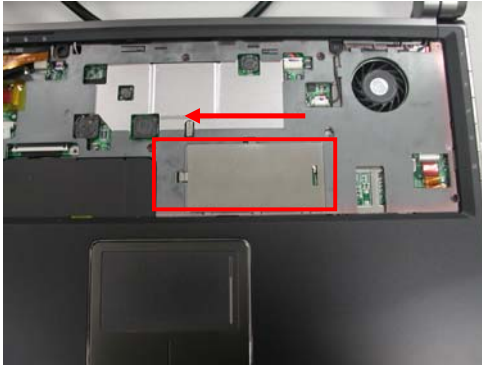
1. Remove 2 screws (M2\*4L(K))



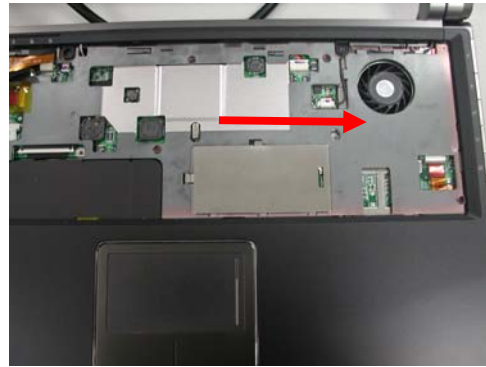
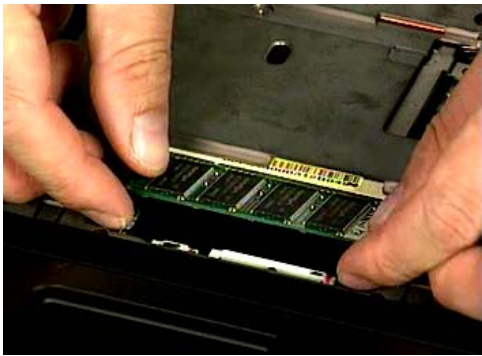
2. Unlock 3 keyboard latches then pull out the keyboard forward and lay the keyboard on the front side then disconnect the FPC.



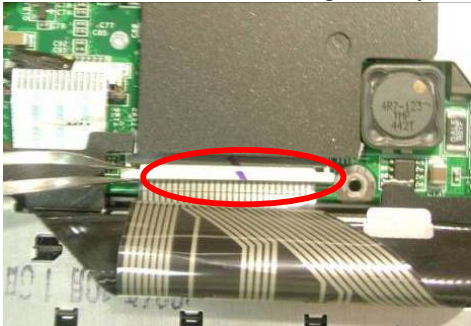
3. The first memory module is under keyboard. Push the memory cover to the left side and lift the memory cover and open the two latches to pop up memory module at 45 degrees angle then pull it out.



4. Insert memory at the same 45° angles and press down until it clicks into the latches then put the memory cover.



5. Connect the keyboard FPC cable and place the keyboard on the top case (make sure the 3 latches are holding the keyboard firmly).



6. Secure 2 screws (M2\*4L(K))



Install battery module .  
Put the battery module into its compartment.



---

## HDD

---

### HDD Upgrade

The W3000A Series Notebook uses an industry-standard 2½" HDD with IDE interface. You can replace the HDD to any capacity of your choice within our approval and prior test.

#### Replacing HDD

Remove battery module

1. Turn the notebook over. Unlock and hold the latch, and remove the battery .



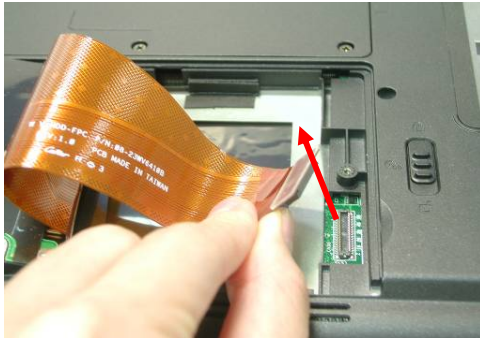
HDD  
MODULE  
REMOVAL

Replacement HDD Module

1. Remove 1 screw (M2\*4L(K)), then remove the HDD door.



2. Lift the hard disk module and disconnect the FPC then take away the hard disk module.



Installing new HDD module.

1. Insert the hard disk module and connect the FPC then lay it down then push it until it's installed properly. Put on the hard disk cover and secure 1 screw (M2\*4L(K)).



Install battery module .  
Put the battery module into its compartment.

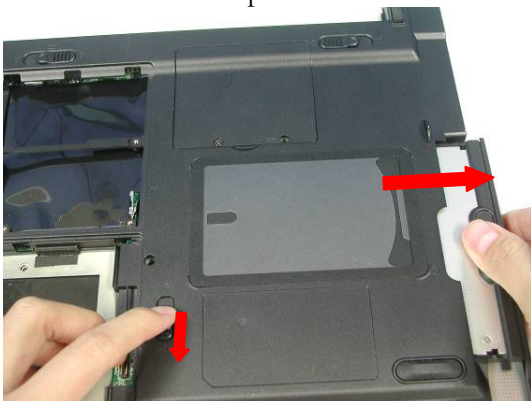


ODD

ODD Module Replacement

Replacing ODD

Remove original ODD module  
Press latch here then pull it out.



Install original ODD module  
Insert the optical drive module to its compartment.



## WLAN Module Replacement

*This slot usually has Wireless LAN module when leaving the factory, this slot is for optional system upgrade.*

Replacing WLAN module

### 1. Remove battery module .

1. Turn the notebook over. Unlock and hold the latch, and remove the battery .



### Replacement Wireless LAN Module

1. Remove 1 screw (M2\*4L(K)), then take the mini-PCI cover off.



2. Remove 2 Antenna cables from Wireless LAN Module

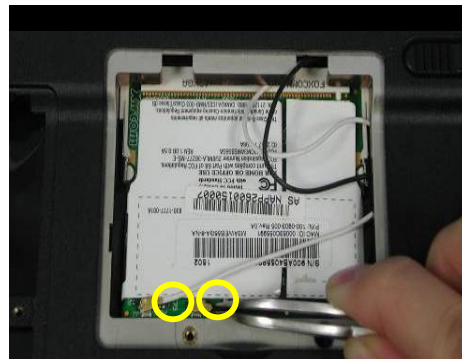


3. Remove the Wireless LAN module by opening the 2 latches aside, which will pop the module up to an angle of 30°, then pull out the module in that angle just like memory module.



#### Installing Wireless LAN Module

1. Insert the mini-PCI module and push down to lock it then connect the 2 antenna cables.



2. Put on the mini-PCI cover on then secure 1 screw (M2\*4L(K)) to fix it.



Install battery module .  
Put the battery module into its compartment.

